

Young shoots and buds

Other signs



Red deer feeding on Pine



Red deer feeding on Spruce

Branches

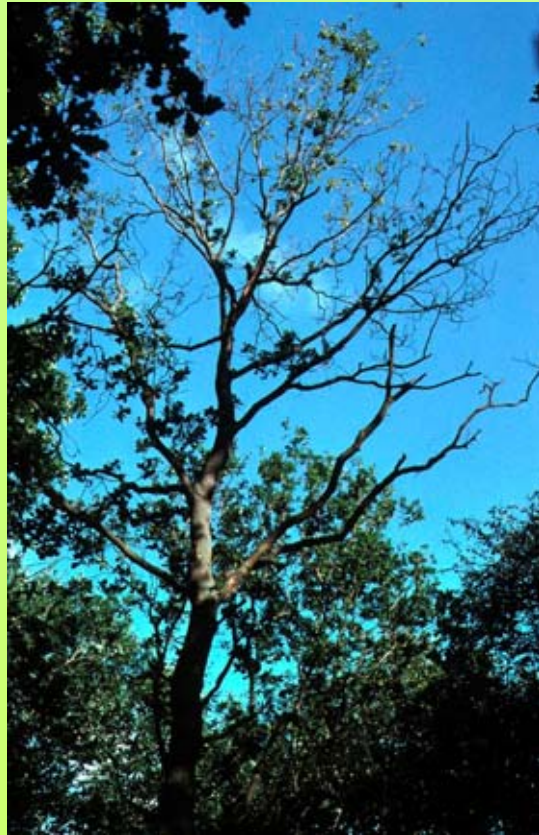
Broken branches



Wind damage on Beech

Branches

Dieback, decline



Oak decline

Branches

Cankers



Nectria ditissima on Beech



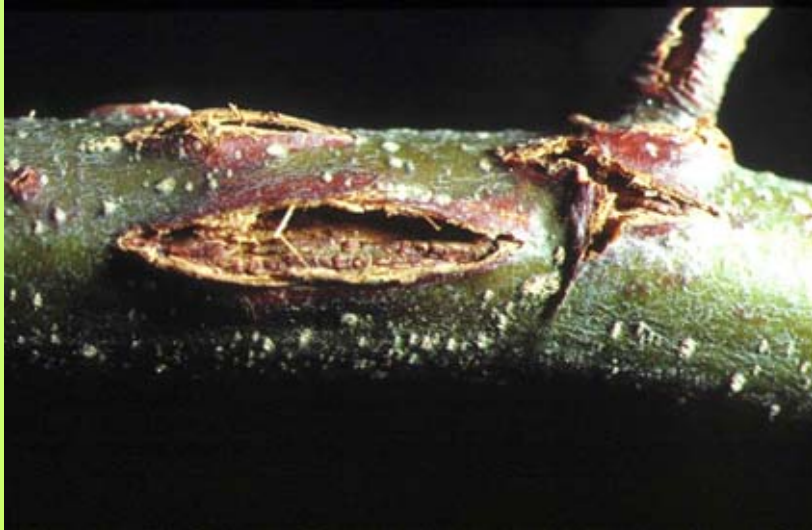
Lachnellula willkommii on Larch



Canker caused by a complex of factors (woodpecker, *Resiniella* sp, pathogens,...) on Oak

Branches

Wounds



Hail damage on Beech



Hail damage on Pine



Melampsora pinitorqua on Pine

Nests of caterpillars



Thaumetopoea pityocampa on Pine

Branches

Mistletoes

CONIFER



On Silver Fir



On Pine

Branches

Witches broom



Melampsora caryophyllacearum on Silver Fir

Stem

Fallen, Uprooted



Broken



Wind damage

Wounds (debarking, cracks etc.)



Sun damage on Beech



Drought, heat or frost ? damage
on Spruce



Lightning effect on Silver Fir



Melampsora pinitorqua on Pine

Stem

Resin flow



Bark beetles attack on Spruce

Slime flux



Agrilus biguttatus on Oak



Nectria coccinea on Beech



Alder phytophthora

Stem

Cankers



Nectria ditissima on Beech



Melampsorella caryophyllacearum on Silver Fir



© P. Spanu



Harvesting damage on Pine



Old harvesting damage on Oak



Lymantria dispar on Oak



Thaumetopoea processionea on Oak



Platypus cylindrus on Oak



Ips typographus on Spruce

Saw dust



Ips typographus on Spruce

Gallery under the bark



Sirex on Spruce

Emergence hole



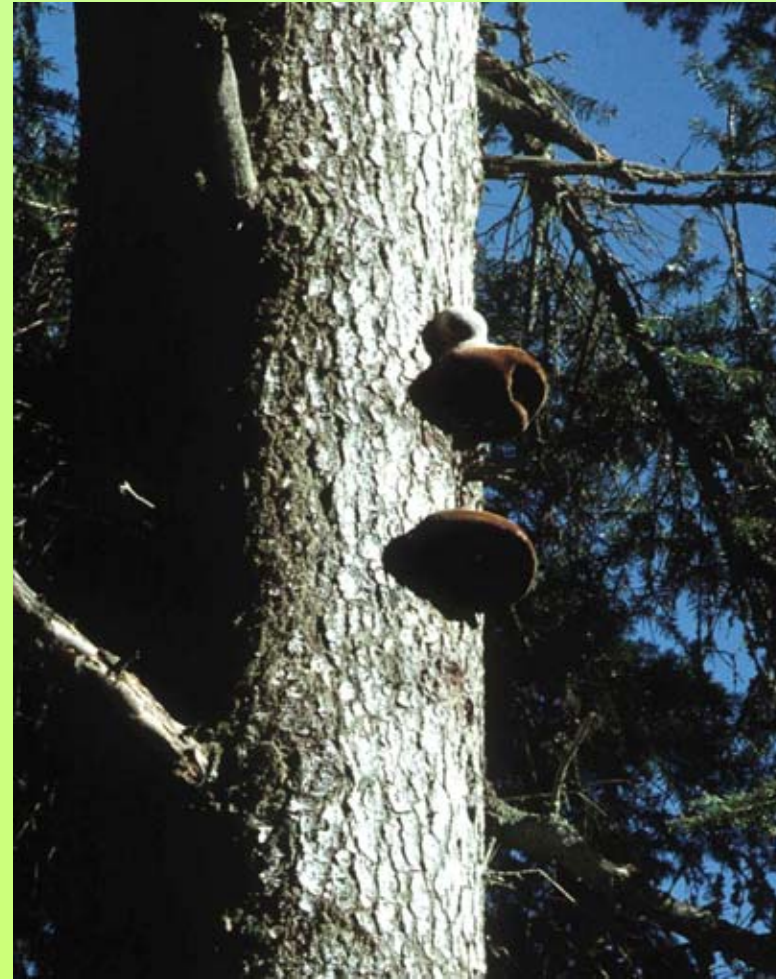
Fomes fomentarius on Beech



Pleurota ostreata on Beech after frost damage



Cronartium on Pine



Phellinus hartigii on Silver Fir

Stem

Other signs



Red deer damage on Pine



Woodpecker on Beech



Woodpecker on Pine



Woodpecker on Beech



Root damage after harvesting on Beech



Collybia fusipes on Oak





Armillaria ostoyae on Pine

All the pictures are taken by Louis-Michel Nageleisen, Département de la Santé des Forêts (France) if not specified

If some pictures are used in other way (web site, book,...), the author's name must be mentioned.